

# Parkheath

*Sold on Service*

---

**Eagle Wharf Road N1**

**£2,500 PCM (£577 per week) - Hackney Band E**



Very spacious 2 double bedroom apartment

Contemporary development

Large fully integrated kitchen

Finished to very high standard

2 bathrooms (1 en suite)

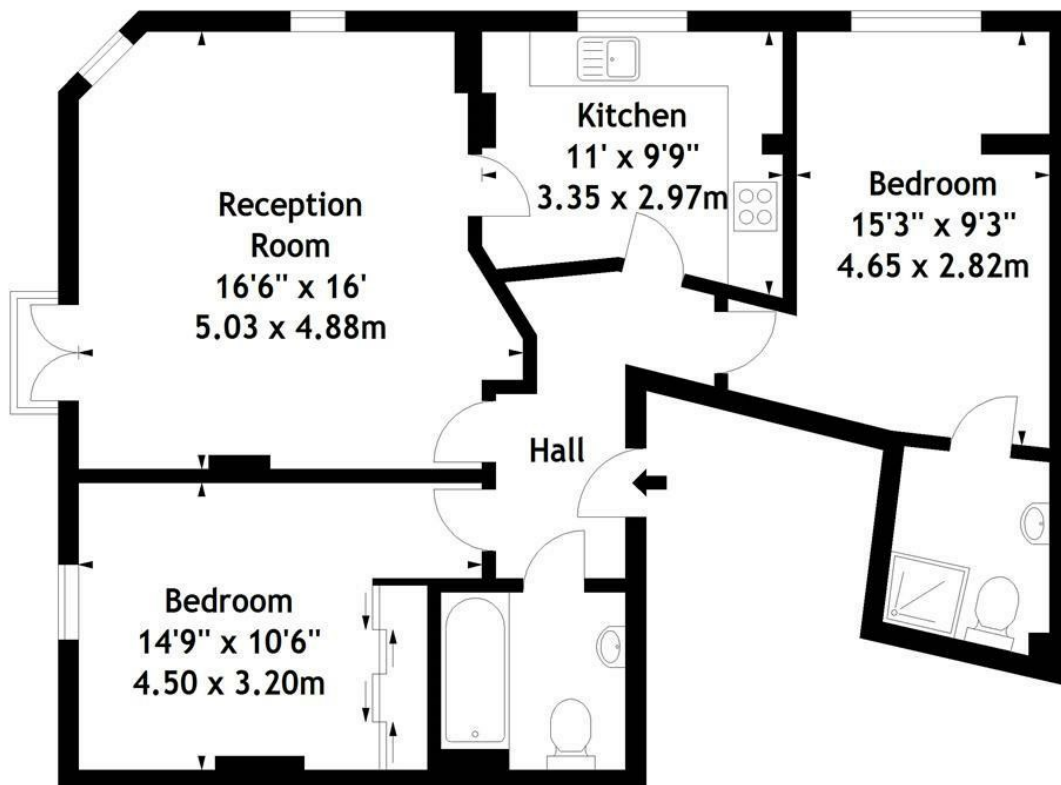
Reception/dining room with wooden floors

Juliet balcony

2nd floor with lift access

Belsize Park Office 020 7431 3104

Eagle Wharf Road, N1  
Approx. Gross Internal Area  
795 Sq Ft - 73.86 Sq M



### Second Floor

Measured in accordance with RICS guidelines. Every attempt is made to ensure accuracy, however all measurements are approximate. This floor plan is for illustrative purposes only and is not to scale.  
© Datography Ltd 2015  
Photographs \* Floorplans \* Virtual Tours  
Tel: 0845 643 4401 [www.datography.com](http://www.datography.com)

The particulars do not constitute part of an offer or contract. The particulars, including text, photographs and plans, are for the guidance only of prospective purchasers/tenants and must not be relied upon as statements of fact. The descriptions provided therein represent the opinion of the author and whilst given in good faith should not be construed as statements of fact. Nothing in these particulars shall be deemed a statement that the property is in good condition or otherwise or that any services or facilities are in good working order. All measurements are approximate